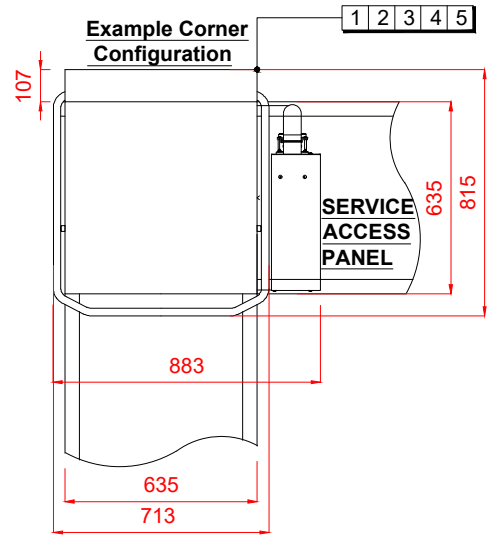
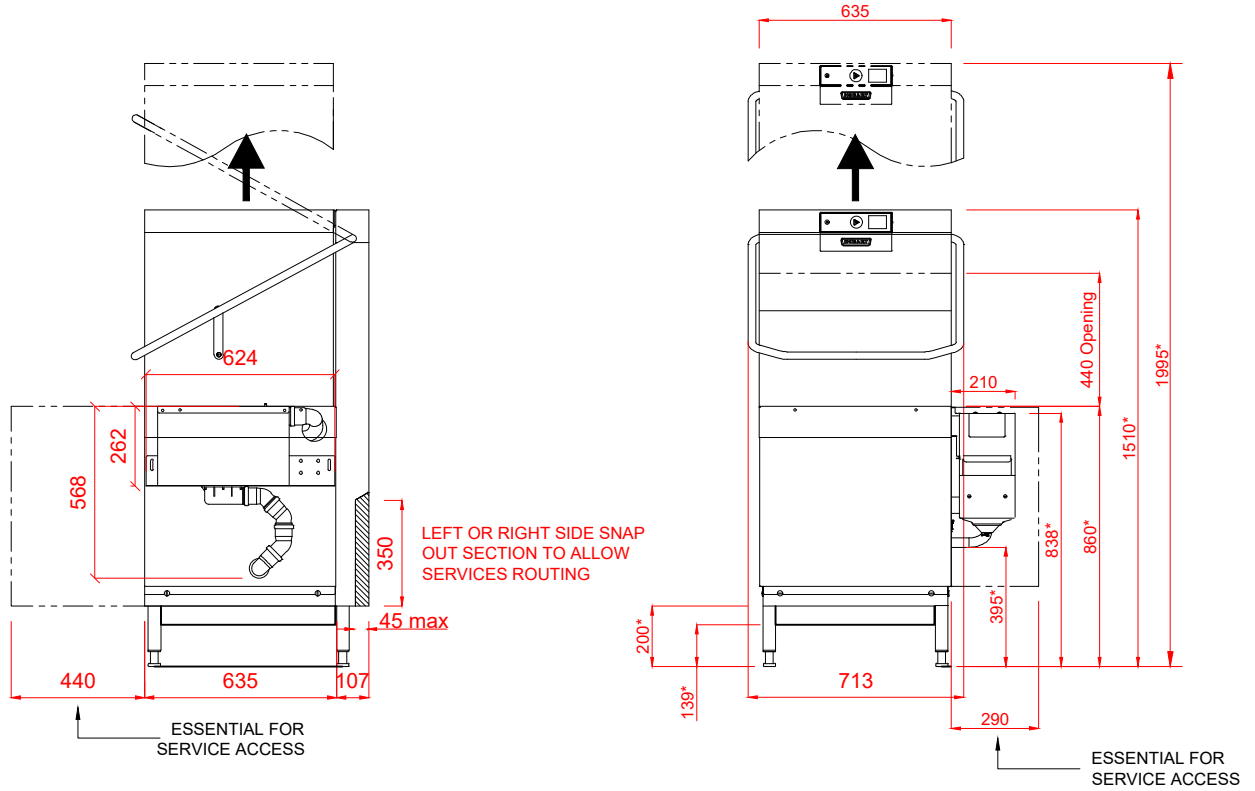


Hood Type Dishwasher with Inbuilt Softener, Automatic Soil Removal and Drain Heat Recovery **AUPRS-10B**



<p>1 Water</p> <p>22mm CONNECTION VIA 2 METRE FLEXIBLE HOSE, FEMALE TERMINATION. COLD WATER SUPPLY MAX 15°C @ 0.8 TO 10 BAR MAX. INITIAL TANK FILL 40 LITRES.</p> <p>RINSE WATER USAGE (ECO) 1.4 LITRES PER CYCLE. RINSE WATER USAGE 2.0 LITRES PER CYCLE. MAX USAGE 140 LITRES PER HOUR. OUR MACHINES ARE SUPPLIED WITH CLASS 'AB' AIR GAP AS STANDARD.</p>	<p>2 Drain</p> <p>DRAIN - 2 METER FLEXIBLE HOSE TO A 40mm TRAPPED STANDPIPE UP TO 750mm MAX A.F.F.L.</p> <p>FLOW RATE 30 LITRES PER MINUTE. DRAIN RATE TYPICALLY 3 MINUTES.</p>	<p>3 Electric</p> <p>17.0kW 400/50/3 + N + E FUSED AT 35amps / PHASE. CONFIGURABLE TO: 10.8kW 400/50/3 + N + E FUSED AT 25amps/ PHASE. 8.3kW 400/50/3 + N + E FUSED AT 16amps/ PHASE. SUPPLIED WITH 2.5 METRES OF CABLE.</p>
<p>4 Other Services</p> <p>RINSE AGENT HOSE - 2.5 METRE FLEXIBLE. DETERGENT HOSE - 2.5 METRE FLEXIBLE.</p>		<p>Notes</p> <p>Approx Weights: EMPTY: 110kg WITH WATER: 130kg Min distance to Wall to Inside of tabling boxed edge 154.5mm. HEIGHTS MARKED * REPRESENT ±20mm. AUTOMATIC SOIL REMOVAL UNIT CAN BE POSITIONED ON EITHER SIDE OF MACHINE.</p>